

ilumCURE 2G

Programmable UV light source in systainer

(Art.-No.: 160000053)

ilumCURE 2G is a UV LED illumination system for hardening UV adhesives reproducibly at high intensities with a peak intensity wavelength of 365 nm

The device facilitates continuous illumination as well as timer- and interface-controlled illumination with an adjustable intensity. It can be employed for both mobile and stationary applications (e.g. in automated production). For mobile usage, the built-in lithium-ion battery permits a continuous operation of up to 3.5 hours at full intensity. The USB interface is used for charging, parameterisation and process automation.

Reproducible hardening processes are ensured in real time by a controller-operated LED current measurement as well as by a heat management system with metal core technology. A robust aluminium housing and an exchangeable battery ensure the longevity of the product.



ilumCURE 2G



Systainer

SETTING OPTIONS / OPERATION

Via Software:

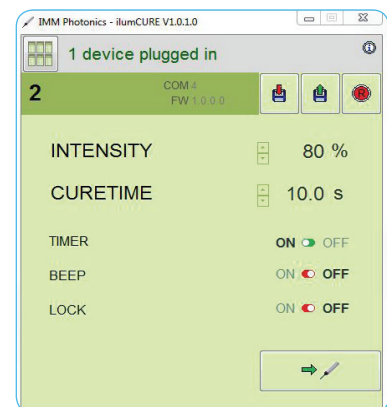
- Intensity from 10 % to 100 %
- Cure time from 1.0 s to 120.0 s
- Illumination timer on or off
- Beep signal at the end of illumination period on or off
- Time programming on hand set locked or allowed

Via hand set:

- Illumination time from 1.0 s to 120.0 s
- Trigger illumination

PROCESS AUTOMATION

- Using a permanent USB connection ilumCURE 2G devices can be controlled remotely from the PC
- A Software Development Kit for the integration into proprietary code (such as Labview, C#) is available
- Major functionalities: illumination on/off, intensity profiles, status requests, up to 127 devices per PC





LED	
Wavelength	365 nm
UVA Power	250 mW (typ.) at 100 % adjusted intensity
Lifetime	> 7000 h at 80 % UV LED emission

Setting options / operation	
Trigger illumination	Via push-button on housing and USB
Illumination time	Timer enabled: 1.0 s – 120.0 s, resolution 0.1 s Timer disabled: limited by protection features only
Intensity	10 % - 100 %, CW-dimmed, 10 % resolution
Timer	Can be switched on and off
Beep signal	Can be switched on and off
Programming on hand set	Can be switched on and off

Software	
Supported Windows Versions	XP (32 bit), 7 (32 and 64 bit), 8 (32 and 64 bit)
Max. number of devices per PC	127

Power management	
Battery	Li-Ion / 3.6 V, 2250 mAh, changeable
Operating time when battery is fully charged	< 4.0 hours fast charge, < 5.5 hours standard charge
Operating time when battery is fully charged	3.5 hours
Fast charged	Automatically detected
Chargers	<ul style="list-style-type: none"> Fast charge: USB mains adaptor 5 V / 1000 mA Standard charge: PC, various USB mains adaptors
Charge indicator (next to USB-B port)	<ul style="list-style-type: none"> Blinking red: fast charge Red: standard charge / Green: battery is fully charged

Protection features	
Battery	Overvoltage and undervoltage, overcurrent, excess temperature
UV LED excess temperature	Switch-off at LED temperature > 50 °C
LED current	Intensity 10 % - 30 %: Switch-off if nominal current value is exceeded by ±10 % Intensity 40 % - 100 %: Switch-off if nominal current value is exceeded by ±5 %
Error indication	<ul style="list-style-type: none"> Blinking orange for 10 s, beeping: LED current error Blinking orange, beeping as long as UV LED too hot: excess temperature

General information	
Total device dimensions	Length 185 mm, max. diameter 27.5 mm
Lighting tip dimensions	Total length of tip 53 mm, diameter 5 mm (along 8 mm)
Weight / material	Approx. 108 g / full-metal housing, anodised aluminium
Operating / storage temperature	+5 °C to +45 °C / -10 °C to +70 °C
Humidity	5 % to 95 % r. h. (non-condensing)
Included in delivery scope	Systainer, USB-A to USB-B cable, fast charge main adaptor
Available accessories	Variable collimating lens W (Article no.: 1600000064) Variable collimating lens N (Article no.: 1600000071)

Subject to technical modifications. As per February 2017.

© IMM Photonics GmbH

ilumCURE 2G

Programmable UV light source in quadrosafe

(Art.-No.: 160000067)

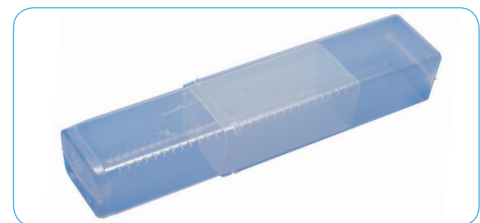
ilumCURE 2G is a UV LED illumination system for hardening UV adhesives reproducibly at high intensities with a peak intensity wavelength of 365 nm

The device facilitates continuous illumination as well as timer- and interface-controlled illumination with an adjustable intensity. It can be employed for both mobile and stationary applications (e.g. in automated production). For mobile usage, the built-in lithium-ion battery permits a continuous operation of up to 3.5 hours at full intensity. The USB interface is used for charging, parameterisation and process automation.

Reproducible hardening processes are ensured in real time by a controller-operated LED current measurement as well as by a heat management system with metal core technology. A robust aluminium housing and an exchangeable battery ensure the longevity of the product.



ilumCURE 2G



Quadrosafe

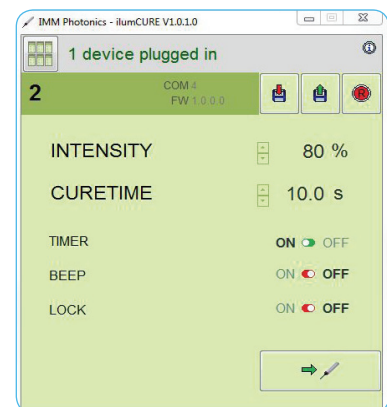
SETTING OPTIONS / OPERATION

Via Software:

- Intensity from 10 % to 100 %
- Cure time from 1.0 s to 120.0 s
- Illumination timer on or off
- Beep signal at the end of illumination period on or off
- Time programming on hand set locked or allowed

Via hand set:

- Illumination time from 1.0 s to 120.0 s
- Trigger illumination



PROCESS AUTOMATION

- Using a permanent USB connection ilumCURE 2G devices can be controlled remotely from the PC
- A Software Development Kit for the integration into proprietary code (such as Labview, C#) is available
- Major functionalities: illumination on/off, intensity profiles, status requests, up to 127 devices per PC



LED	
Wavelength	365 nm
UVA Power	250 mW (typ.) at 100 % adjusted intensity
Lifetime	> 7000 h at 80 % UV LED emission

Setting options / operation	
Trigger illumination	Via push-button on housing and USB
Illumination time	Timer enabled: 1.0 s – 120.0 s, resolution 0.1 s Timer disabled: limited by protection features only
Intensity	10 % - 100 %, CW-dimmed, 10 % resolution
Timer	Can be switched on and off
Beep signal	Can be switched on and off
Programming on hand set	Can be switched on and off

Software	
Supported Windows Versions	XP (32 bit), 7 (32 and 64 bit), 8 (32 and 64 bit)
Max. number of devices per PC	127

Power management	
Battery	Li-Ion / 3.6 V, 2250 mAh, changeable
Operating time when battery is fully charged	< 4.0 hours fast charge, < 5.5 hours standard charge
Operating time when battery is fully charged	3.5 hours
Fast charged	Automatically detected
Chargers	<ul style="list-style-type: none"> Fast charge: USB mains adaptor 5 V / 1000 mA Standard charge: PC, various USB mains adaptors
Charge indicator (next to USB-B port)	<ul style="list-style-type: none"> Blinking red: fast charge Red: standard charge / Green: battery is fully charged

Protection features	
Battery	Overvoltage and undervoltage, overcurrent, excess temperature
UV LED excess temperature	Switch-off at LED temperature > 50 °C
LED current	Intensity 10 % - 30 %: Switch-off if nominal current value is exceeded by ±10 % Intensity 40 % - 100 %: Switch-off if nominal current value is exceeded by ±5 %
Error indication	<ul style="list-style-type: none"> Blinking orange for 10 s, beeping: LED current error Blinking orange, beeping as long as UV LED too hot: excess temperature

General information	
Total device dimensions	Length 185 mm, max. diameter 27.5 mm
Lighting tip dimensions	Total length of tip 53 mm, diameter 5 mm (along 8 mm)
Weight / material	Approx. 108 g / full-metal housing, anodised aluminium
Operating / storage temperature	+5 °C to +45 °C / -10 °C to +70 °C
Humidity	5 % to 95 % r. h. (non-condensing)
Included in delivery scope	USB-A to USB-B cable, USB flash drive with Software
Available accessories	<ul style="list-style-type: none"> Fast charge USB mains adaptor (Article no.: 8900001089) Variable collimating lens W (Article no.: 1600000064) Variable collimating lens N (Article no.: 1600000071)

Subject to technical modifications. As per February 2017.

© IMM Photonics GmbH